



Solar GI HRAM

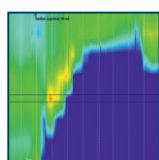
High Resolution Anorectal Manometry

- Contour plot display
- Full coverage of anal sphincter
- Easy placement of water perfused or solid state catheter
- Up to 24 pressure channels

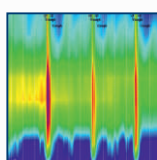
High Resolution Anorectal Manometry (HRAM) is a new approach of measuring anorectal pressures. Besides conventional manometry displays, rapid data interpretation via contour plots can be established.

Some Solar GI HRAM benefits:

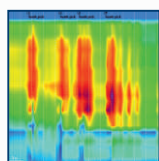
- Accurate and consistent data
- Optimal sphincter visualization
- Easy correction of catheter movement



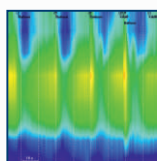
Balloon expulsion



Cough



Sensation test



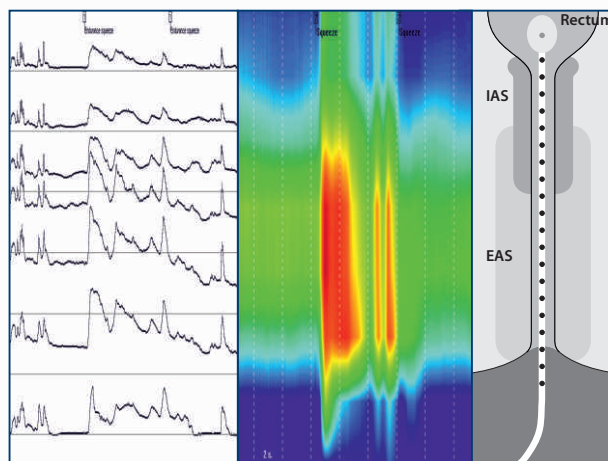
RAIR



Solar GI HRAM

Visual View

The contour plot display offers more information than conventional pressure curves, and is still easier to analyse due to the recognition of typical anal sphincter patterns. So, more information and easier analysis go perfectly together.



Squeeze test: Conventional versus High Resolution Anorectal Manometry

Easy data analysis

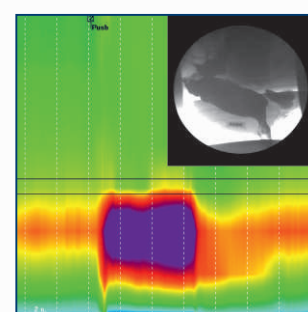
Solar GI HRAM analysis software helps you to review all manometry data very efficiently. It provides fast and accurate determination of diagnostic parameters using intuitive graphical markers.

Additional benefits are:

- Easy identification of IAS and EAS.
- Automatic result calculation.
- Anal pressures can be shown relative to rectal pressure or outside level.
- Switching between contour plot or graphs.

Defecation combined with X-ray

By adding X-ray images and cine loops to the HRAM pressure measurement you can see defecation in real time.

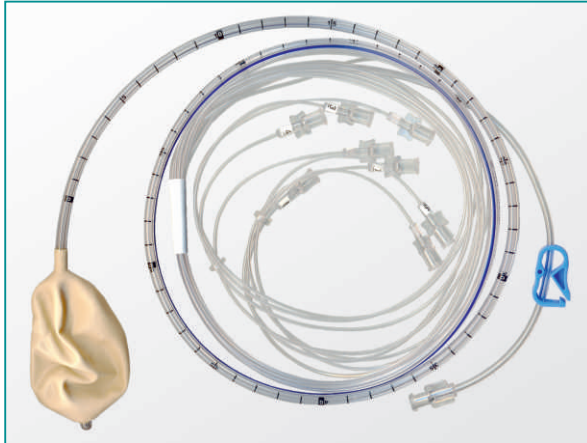


Push

Water perfused HRAM catheters

Easy to use and cost efficient

- Water Perfused Manometry has been the world standard for over 40 years.
- Single use water perfused catheters need no catheter calibration, temperature acclimation or cleaning, whereas silicon reusable water perfused catheters are autoclaveable.
- Attractive purchase prices and no risk of expensive repairs or cancellation of examinations due to catheter failure.



Single use water perfused HRAM catheters

- 8+1 or 20+1 pressure channels
- Single use, so no more cleaning
- Latex free balloons available



Multi use water perfused HRAM catheters

- 8+1 or 20+1 pressure channels
- Silicon or PVC
- Latex free balloons
- Customized designs possible

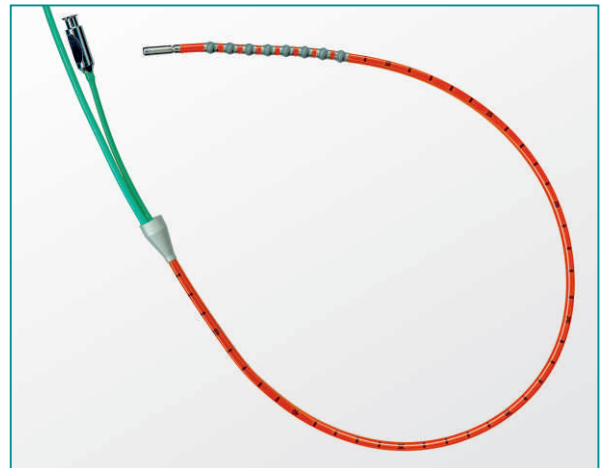
Solid state HRAM catheters

Fast and simple setup

- Reusable solid state HRAM catheters need no study preparations, no calibration and use only one connector for all pressures.
- Solid state Manometry has been a proven technique for over 15 years that offers rapid response to measure the true physiological signature.

Reusable solid state HRAM catheters

- 8 circumferential pressure channels
- 1 rectal balloon pressure
- Possibility to add latex free balloons
- Customized designs possible



Your official MMS distributor:

Medical Measurement Systems b.v.

P.O. Box 580
7500 AN Enschede
The Netherlands
T : + 31 - 53 - 480 37 00
F : + 31 - 53 - 480 37 01
E : info@mmsinternational.com
I : www.mmsinternational.com

Medical Measurement Systems USA, Inc.

383 Central Ave, Suite LL40
Dover, NH 03820, USA
T : 800 - 236-9310
T : 603 - 750-0037
F : 603 - 750-3155
E : info@mmsusa.net
I : www.mmsusa.net

MMS distributors can be found at: www.mmsinternational.com