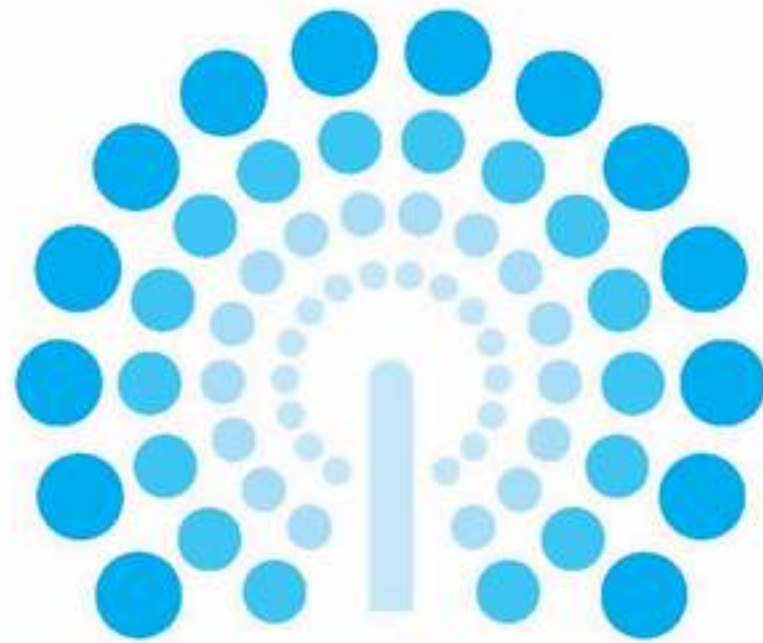




Quality system
certified to
UNI EN ISO 9002



EMDA[®]

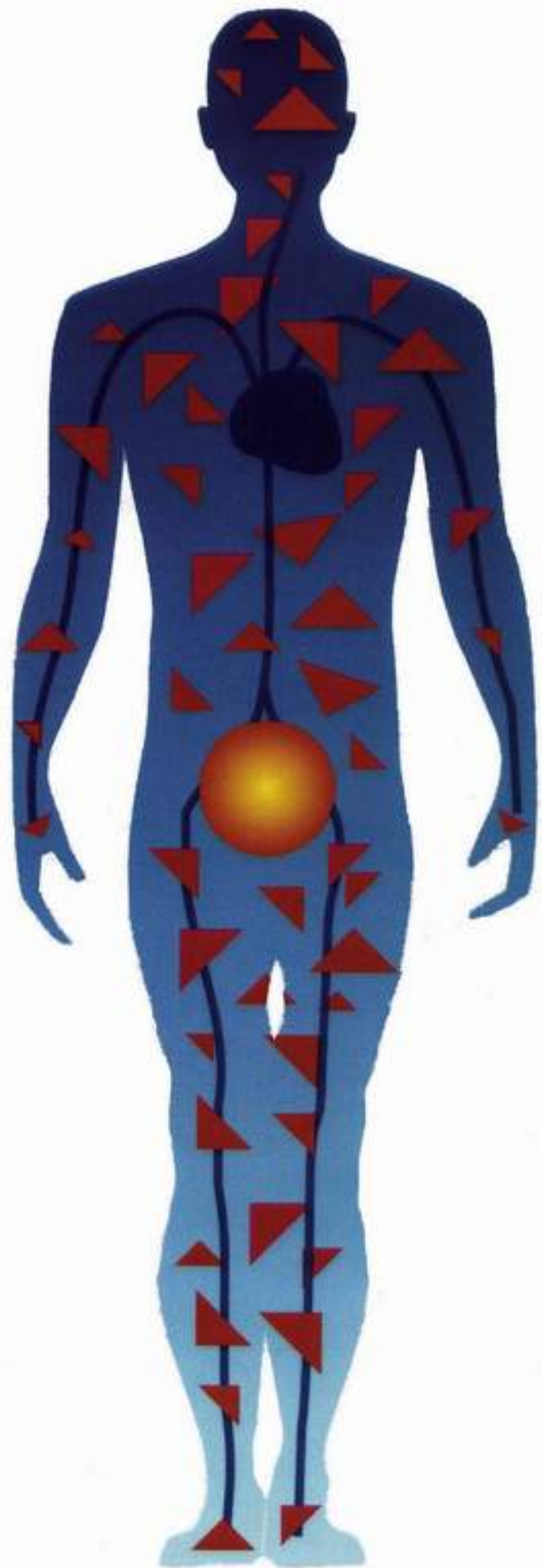
Electro Motive Drug Administration

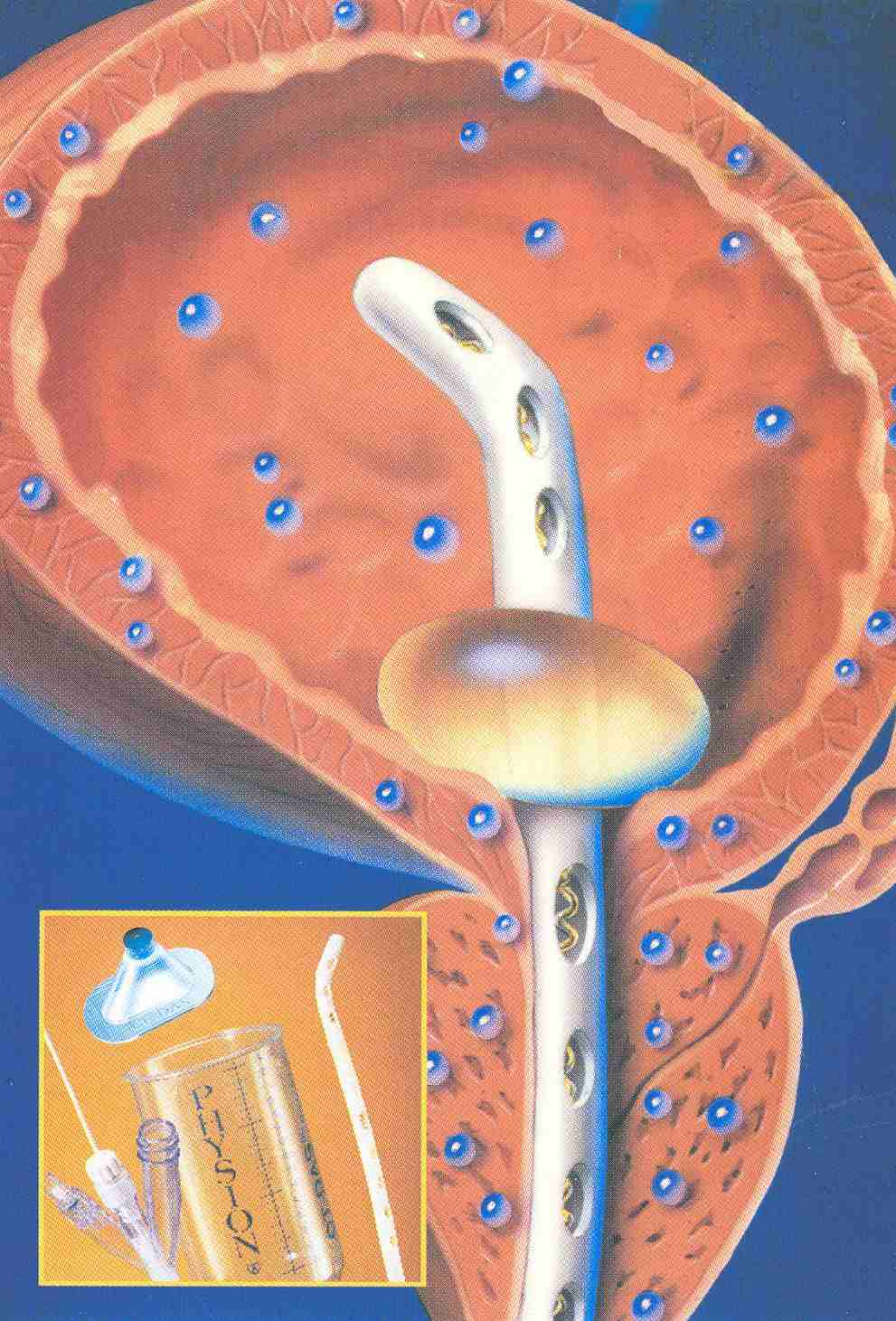


PHYSION[®]

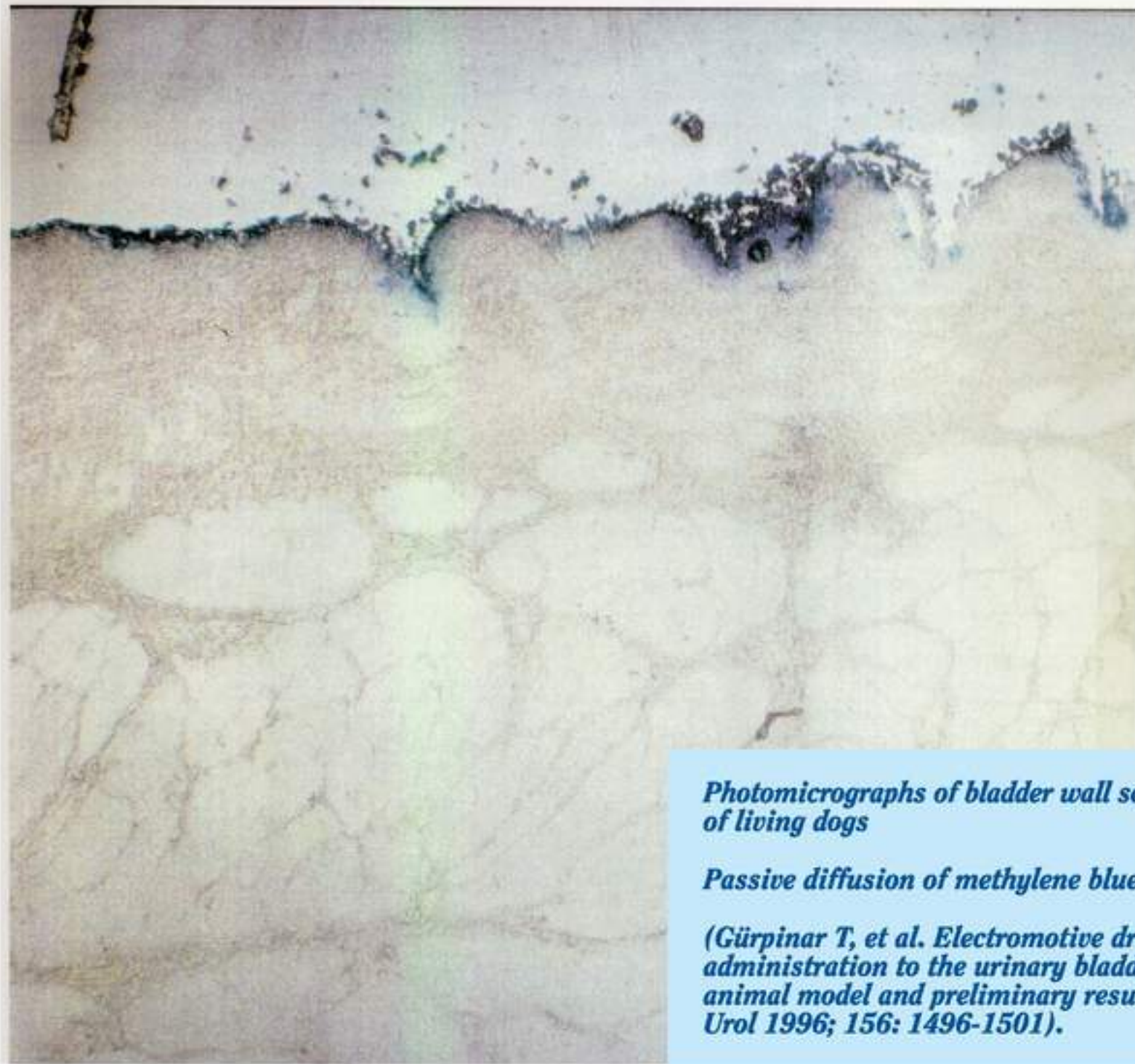
SYSTEMIC DRUG ADMINISTRATION

- Therapeutic drug levels in the bladder and prostate are limited by toxic levels in other vital organs: kidneys, liver, heart, CNS, bone marrow
- Systemic side effects may be unpleasant, dangerous, or even lethal, as in the case of anticancer drugs.





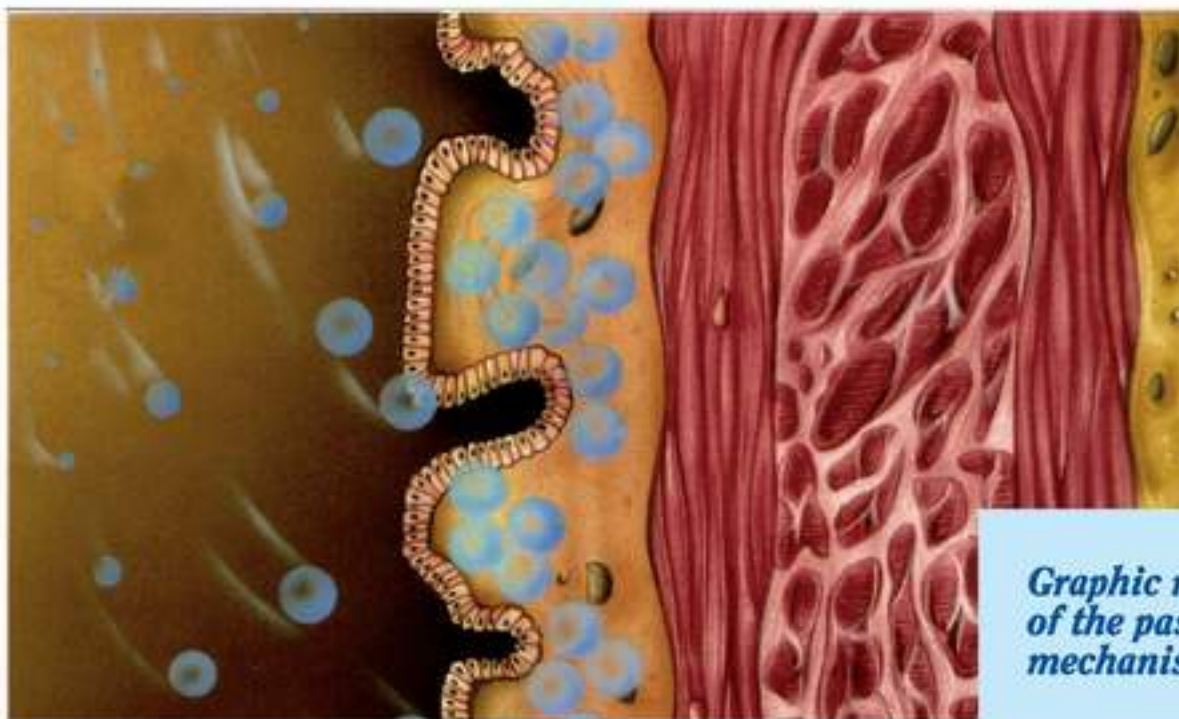
MECHANISM OF PASSIVE DIFFUSION



*Photomicrographs of bladder wall sections
of living dogs*

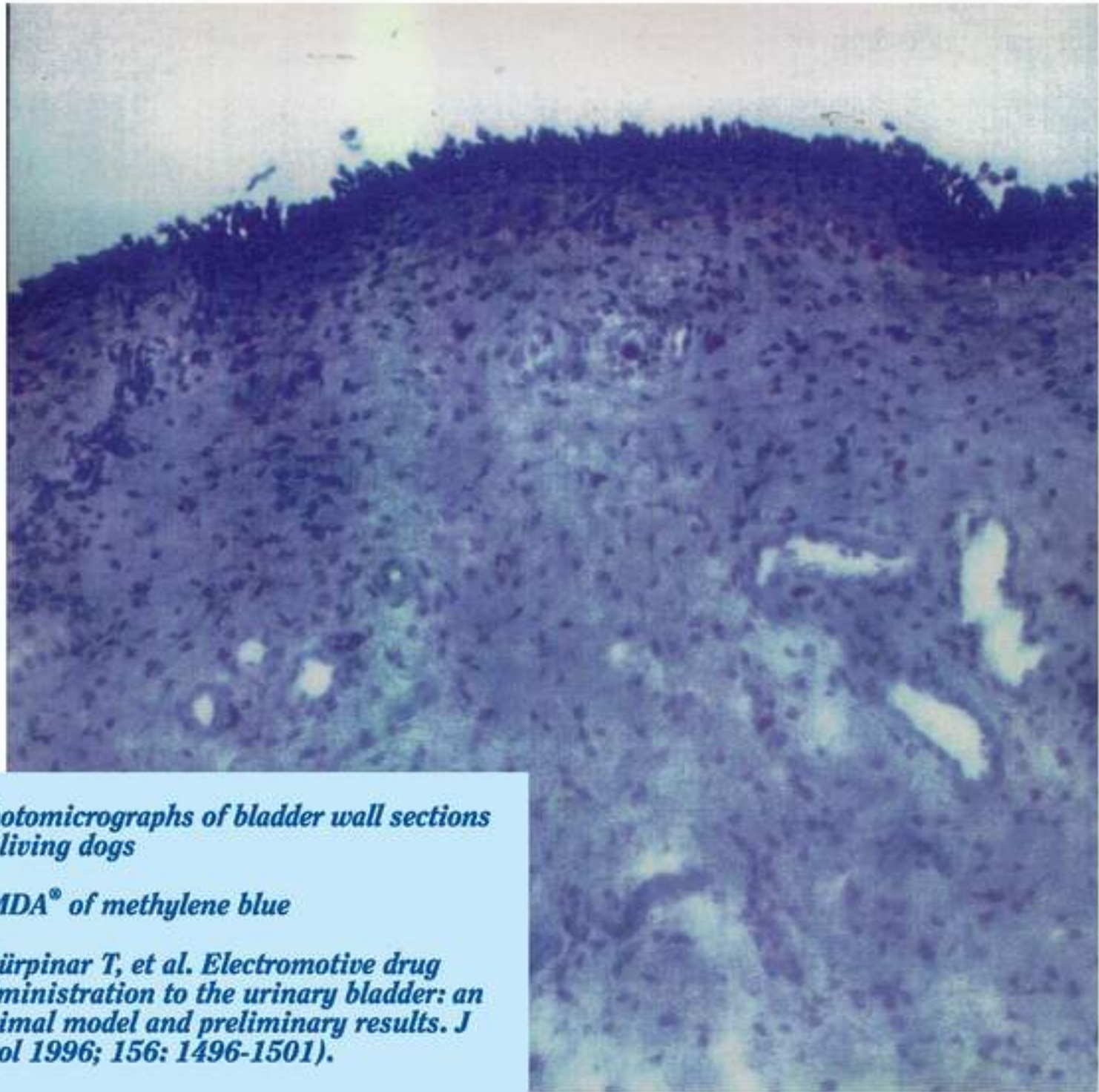
Passive diffusion of methylene blue

*(Gürpınar T, et al. Electromotive drug
administration to the urinary bladder: an
animal model and preliminary results. J
Urol 1996; 156: 1496-1501).*



*Graphic representation
of the passive diffusion
mechanism*

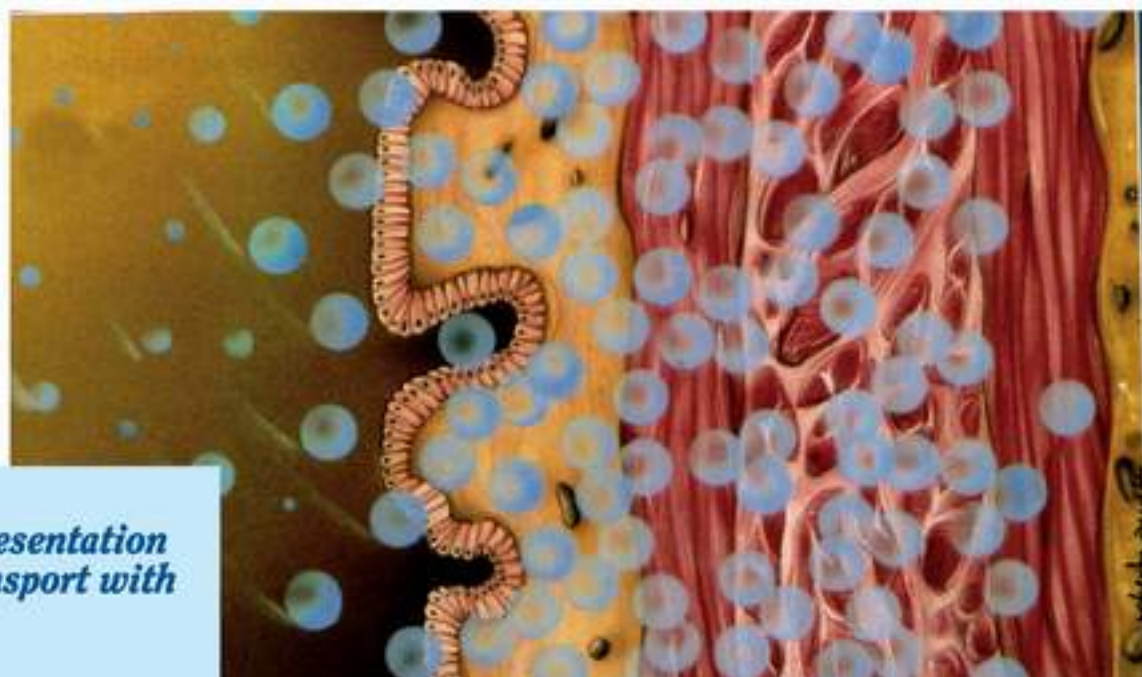
MECHANISM OF ACTIVE TRANSPORT WITH EMDA®



*Photomicrographs of bladder wall sections
of living dogs*

EMDA® of methylene blue

*(Gürpınar T, et al. Electromotive drug
administration to the urinary bladder: an
animal model and preliminary results. J
Urol 1996; 156: 1496-1501).*



*Graphic representation
of active transport with
EMDA®*